

GLASS MASK



“Betrayal always comes from those we love”

Sisters Ezgi and Deniz are driven apart by their love for the same man, a fall from a cliff, and the truth about their tragic start in life, which will lead to a vengeful battle five years on.

Genre:
Drama

Production:
Aslan Production
19x1 commercial hour

Duration:
Weekly, Prime Time

Channel:
Star TV



GLASS MASK

glass mask



Sharing a tragic start in life, Ezgi and Deniz grow up believing they are twins but become bitter enemies prepared to destroy each other when they learn the terrible truth hidden by their parents. Their rivalry deepens when they fall in love with the same man, paving the way for further heartache and acrimony.

They are sharply contrasting characters: Deniz is easy going and tolerant; Ezgi is hard and ambitious. To make matters worse, Ezgi is extremely jealous of Deniz and in love with her boyfriend Emre, the heir of a powerful company called Deran Holding.

Ezgi is the company's product manager but covets Deniz's role as chief designer. Deniz thinks Ezgi's anger will pass and is happily focused on her impending marriage to Emre. However, Ezgi seduces Emre on a business trip and then makes sure that Deniz finds out. All hell breaks loose.

The two sisters are drawn into a fierce argument on the edge of a cliff and Ezgi does nothing to save Deniz when she falls, apparently to her death. The family goes into mourning and Ezgi goes on to marry Emre. She also takes the role as head of design, passing Deniz's designs off as her own.

Unknown to them all, Deniz survived the fall. Horrified by the betrayal of those closest to her, she goes into hiding, full of anger, and seeks the truth about her life. She will discover her real father was wrongly accused of murder and seek vengeance.

Deniz, it emerges, was adopted by detective Selim when he covers up his accidental killing of people in a shoot-out, including his partner, a criminal and his pregnant wife. The woman gives birth to a baby girl and dies. Selim decides to raise the girl as his own.

Nermin, his partner's wife, miscarries her baby in shock at her husband's death. She walks into the hospital nursery, snatches a baby girl and flees. She names her Ezgi and raises her as her own daughter. Nermin and Selim ultimately marry and bring up the girls together, haunted by their secrets.

After her disappearance, Deniz has five years to digest the truth about the tragic start to her life and is ready to seek retribution. It turns out that she is actually the granddaughter of Nusret Deran, the founder of Deran Holding. He has spent five years being treated for illness in America, before returning to Istanbul.

Ezgi and Emre are astounded when they see before them the woman they believed long dead and hear her introduced as Elif Deran. Deniz just smiles, biding her time. The secret war between Ezgi and Deniz now begins. They are prepared to crush each other.



CAST



Gizem Karaca
Village Girl

Burak Yamantürk
Forbidden

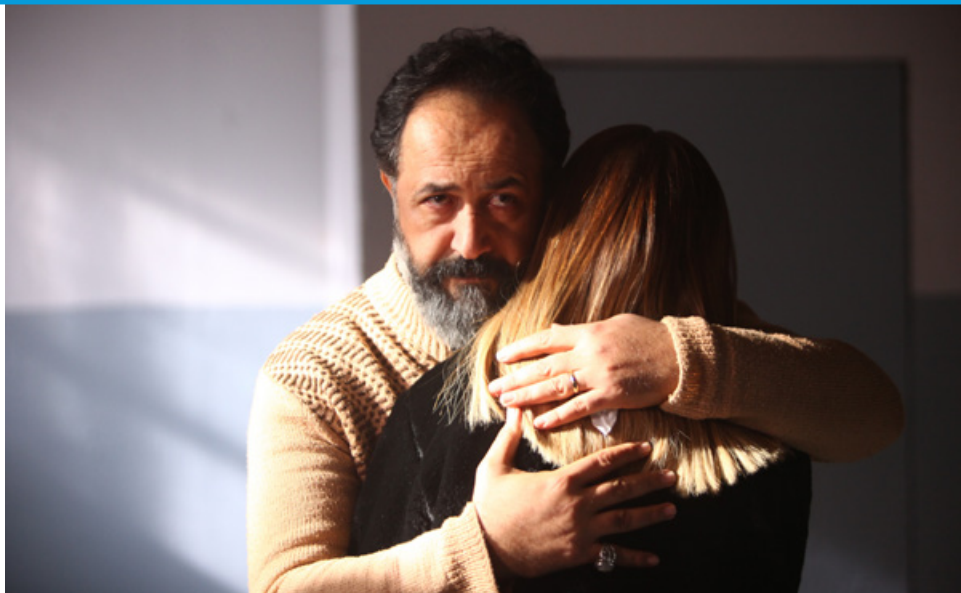
Merve Boloğur
Magnificent Century

Yusuf Çim
LadyVille



GLASS MASK

glass mask



Abdi İpekçi Cad. Park 19 Kat: 3
Nişantaşı 34367 İstanbul - Turkey

T. +90 212 240 5769
F. +90 212 296 6053

www.theglobalagency.tv



glass mask

For more information, please contact the sales agent in your territory

GÖZDE SERGİLİ

Europe & Scandinavia
gozde@theglobalagency.tv
+90 533 928 8065

ŞENAY TAŞ

Central and Eastern Europe
senay@theglobalagency.tv
+90 532 285 0696

İŞİL TÜRKŞEN

Asia
isil@theglobalagency.tv
+90 533 459 9439

EKİN GABAY

*North America, Canada, UK,
Australia, New Zealand & Baltics*
ekin@theglobalagency.tv
+90 533 727 4123

IVÁN SÁNCHEZ

Latin America
ivan@theglobalagency.tv
+90 530 952 6648

DENİZ TÜZÜN

Russia/CIS
deniz@theglobalagency.tv
+90 530 140 9922

MIROSLAV RADOJEVIC

MENA & Africa
miroslav@theglobalagency.tv
+90 530 943 4146