

# THE LEGEND



On most TV talent shows, it's the jury that decides whether a contestant continues and it's the audience that can change their fate. But what if we gave the power to the contestants, for them to write their own destiny?

**Genre:**  
Singing Talent Show

**Duration:**  
13 x 2 Commercial hours  
Weekly, Prime Time



# THE LEGEND

THE  
LEGEND



The LEGEND gives the contestants the opportunity to push their limits over the top and become... The LEGEND.

In this 13-week-long competition the contestants decide if their performance is good enough... or not!



The contestants are chosen from across different categories: former talent show stars, great voices that have become phenomenally successful on the internet, conservatory students with perfect voices and people from ordinary backgrounds. They are chosen after special and challenging rounds of the contest. Next, the jury members will choose the best of them. The main target for the contestants is to stay in the show till Grand Finale week for the big prize. In the Grand Finale, the winner gets a big cash prize and will record their own album. The reward for the second-placed contestant will be to record a single and shoot a video clip and the one in third place will record a single.

Seven contestants will take the stage in each episode. The three jury members will vote to decide the best three contestants. Each week 3 contestants which ranked in the top 3 will be awarded with weekly prizes (i.e. 5.000US\$ for number#1, 2.500US\$ for number#2 and 1.000US\$ for number#3) and continue in the show in the following week. One contestant will be saved by the audience and continue in the show in the following week and 3 contestants will be eliminated from the show. The next week 3 new contestants will join the show and 7 contestants compete again with the same structure. If it is a live show, the viewers also get involved in the voting/saving process through the show's app. In the 13th week, seven contestants will then battle it out in the grand finale week.



# THE LEGEND

THE  
LEGEND



## JURY MEMBERS

Three famous jury members will take part in the program. They are well known professionals with reputable names in the music industry.

*After each performance, jury members will give them points out of 100.*

Each jury member has a chair right in front of the stage.

The profiles and characters of the jury members must be different from each other. It is the same case with the contestants.

One of them should be in the role of motivating the contestants, encouraging them to take risks. The next one should be kinder and more protective, not in favor of taking risks, assuming a role of a parent discouraging them from taking excessive risks. One of them must take on the role of highlighting the contestants' weak points, criticizing them more harshly, making them confront reality.



# THE LEGEND

---

THE  
LEGEND



## ELIMINATION WEEKS: (12 WEEKS)

In each elimination week, we see 7 contestants on stage.

They have up to 2 chances to prove to the jury that they have what it takes to be a music icon.

Each contestant has a list of five songs they've been practicing, but it's up to sheer luck to determine which one they will have to sing.

Now it's up to the contestants to sing their hearts out and the jury members will rate their performance.

After each performance, the jury votes for the contestant.

Those who receive more than 70% are safe and can decide their own destiny. It's now up to the contestant to decide whether they challenge themselves and sing another song to get a higher score.

If the contestant doesn't feel secure enough with the score, they have another chance to challenge themselves and sing for a 2nd time. Because the higher the score, the better their chance of progressing.

They never see their competitors' scores until the end of the episode. And they must rely on their instincts and self-belief.

Each week the top 3 contestants automatically continue with the show in the following week and they awarded weekly prizes.

One contestant who is saved by audience will also continue in the show the following week.

Three contestants will be eliminated from the show and 3 new contestants will join the show the following week.

At the end of each show, the audience will give a second chance to one of the 4 contestants who are not ranked in the top 3. The contestant with the most audience votes will come back in the next episode and compete again to get a chance to stay in the show. This chosen contestant does not necessarily have to be the fourth contestant following the first three with the highest scores on the scoreboard and their score does not have to be too high up on the board. If the audience think that a promising contestant has star quality, this is enough for the audience to choose that person with a consensus.

Those who manage not to be eliminated will increase their popularity as long as they remain on the show, even if they do not make it to the finale.



# THE LEGEND

THE  
LEGEND

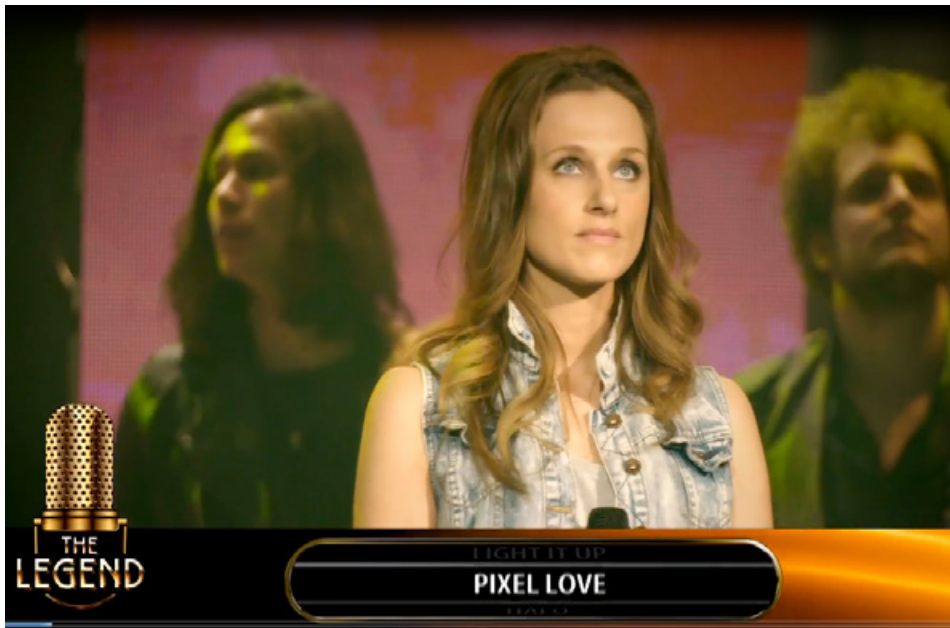


*Sometimes it only takes 1 song.*

The most exciting moments of the show are when the contestant makes the decision to “challenge themselves or not” The contestant can decide to “not challenge themselves” and wait to hopefully become one of the 3 best contestants in the competition, for example with an 88% score, or decide to “challenge themselves” and take a risk at raising their score. In this way, they are always pushed to perform to their best.

While taking this risk the contestant may also decrease their score. If that happens, the 2nd score will be their final score.

The critical thing is that the contestant doesn’t know the others’ scores while trying to increase their own score.



# THE LEGEND

THE  
LEGEND



## GRAND FINALE:

Seven powerful voices who manage to stay in the fierce competition participate in the Grand Finale.

We watch “Blind Challenges” at Grand Finale. In the challenges, the contestants will have 2 chances to do their best but this time they won’t even know their first performance score. They will have to evaluate themselves without knowing their score, therefore a blind challenge starts for them. If a contestant feels they are in a risky position or they can perform better, they can push the “I Challenge Myself” button and use their right to a second performance. They must rely on their instincts and self-belief. They might go for a second chance or not but there’s no going back. Their most recent score is their final score.

During the final week, a spectacular feast of music is presented: seven contestants take to the stage and perform one after another.

The contestant who wins the competition gets a big cash prize and will record their own album.

The reward for the second-placed contestant will be to record a single and shoot a video clip.

The one in third place will record a single as their reward.

***Watch and see who will be... The LEGEND.***



Abdi İpekçi Cad. Park 19 Kat: 3  
Nişantaşı 34367 İstanbul - Turkey

T. +90 212 240 5769  
F. +90 212 296 6053

[www.theglobalagency.tv](http://www.theglobalagency.tv)



*For more information, please contact the sales agent in your territory*

**GÖZDE SERGİLİ**  
*Europe & Scandinavia*  
gozde@theglobalagency.tv  
+90 533 928 8065

**ŞENAY TAŞ**  
*Central and Eastern Europe*  
senay@theglobalagency.tv  
+90 532 285 0696

**İŞİL TÜRKŞEN**  
*Asia*  
isil@theglobalagency.tv  
+90 533 459 9439

**EKİN GABAY**  
*North America, Canada, UK,  
Australia, New Zealand & Baltics*  
ekin@theglobalagency.tv  
+90 533 727 4123

**IVÁN SÁNCHEZ**  
*Latin America*  
ivan@theglobalagency.tv  
+90 530 952 6648

**DENİZ TÜZÜN**  
*Russia/CIS*  
deniz@theglobalagency.tv  
+90 530 140 9922

**MIROSLAV RADOJEVIC**  
*MENA & Africa*  
miroslav@theglobalagency.tv  
+90 530 943 4146